

## "SCRUBBER" NON WOVEN CLEANING DISC FOR PORTABLE ANGLE GRINDERS



The new GLOBE **SCRUBBER** disc was conceived for cleaning surfaces of stainless steel, steel and non ferrous metals, allowing to eliminate: paint from surfaces, different types of oxidations such as rust, calamine, limescale and concrete residues, bringing the workpiece to an excellent condition. GLOBE "SCRUBBER" is made of a fiberglass backing pad, on which a very resistant and flexible nylon fiber agglomerate is installed, impregnated with synthetic and abrasive resin. The extremely open structure of this product avoids clogging. Perfect for the following fields: shipbuilding construction, bodywork, carpentry.

### WORKABLE MATERIALS

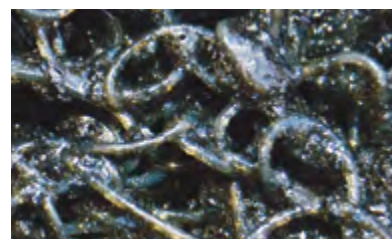
stainless steel and steel, aluminium, titanium, non ferrous metals, alloys, marble, granite, stones, fiberglass, plastic, wood.

### MAIN USES OF GLOBE "SCRUBBER"

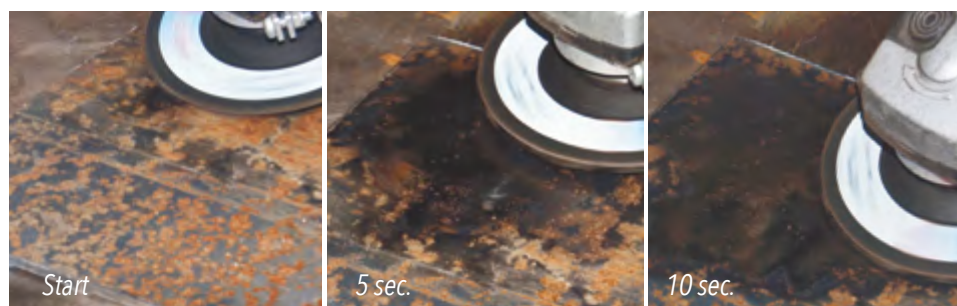
- Treatment of surfaces
- Cleaning of weldings without removing material
- Pickling
- Removal of paints and enamels, burrs, rust and calamine
- Removal of sediments, protective wax, concrete, salt, grease




Before and after SCRUBBER pass on a stove enamelled tube.



SCRUBBER: magnification of the special structure of the compound.



TYPE OF ABRASIVE	DIMENSIONS (diam - bore) mm	GRIT	ART. CODE	
NON WOVEN	115x22,23	MEDIUM (BLACK)	G6211 •	5pcs
NON WOVEN	125x22,23	MEDIUM (BLACK)	G6212 •	5pcs
NON WOVEN	115x22,23	HARD (RED)	G6221	5pcs
NON WOVEN	125x22,23	HARD (RED)	G6222	5pcs

## THE ADVANTAGES OF SCRUBBER

- Quick and precise cleaning
- Does not alter geometry of the the workpiece
- Economical
- Avoids the use of traditional, toxic and corrosive chemical products
- High flexibility
- Allows the use of coolants